



FINISH: P/C MATTE BLACK

Rev	Date	Description

ALL DIMENSIONS IN (mm)
UNLESS OTHERWISE SPECIFIED
BREAK ALL SHARP EDGES

TOLERANCES
(BEFORE PAINTING
& AFTER PLATING)
X ± 1.00
X.X ± 0.50
X.XX ± 0.10
ANGLES ± 0.5°

A01- RENDER

CLIENT: RFA

PROJ. NO.: TBA

PART NO.: --

Revision --

Page 1

4000mm(H) x 1067mm(D)
PALLET RACKING

PRODUCT CODE: RFA6014

Date: 18/07/2023

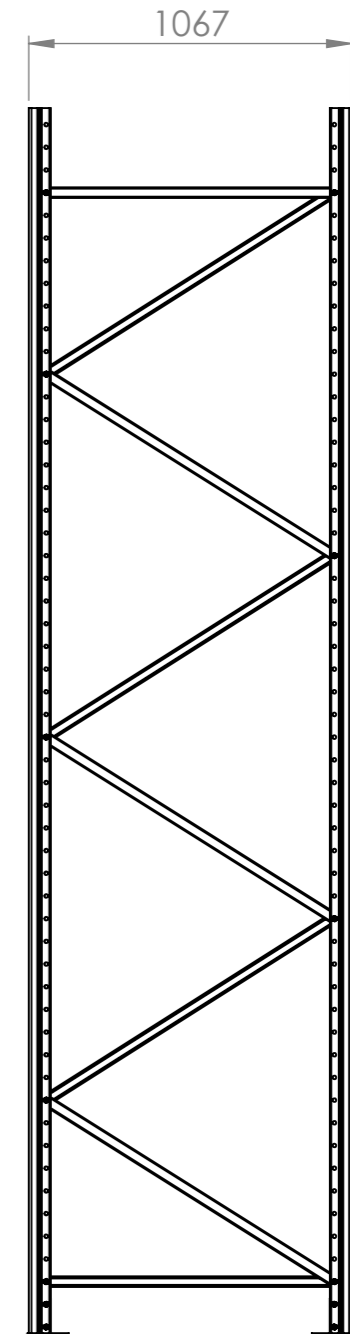
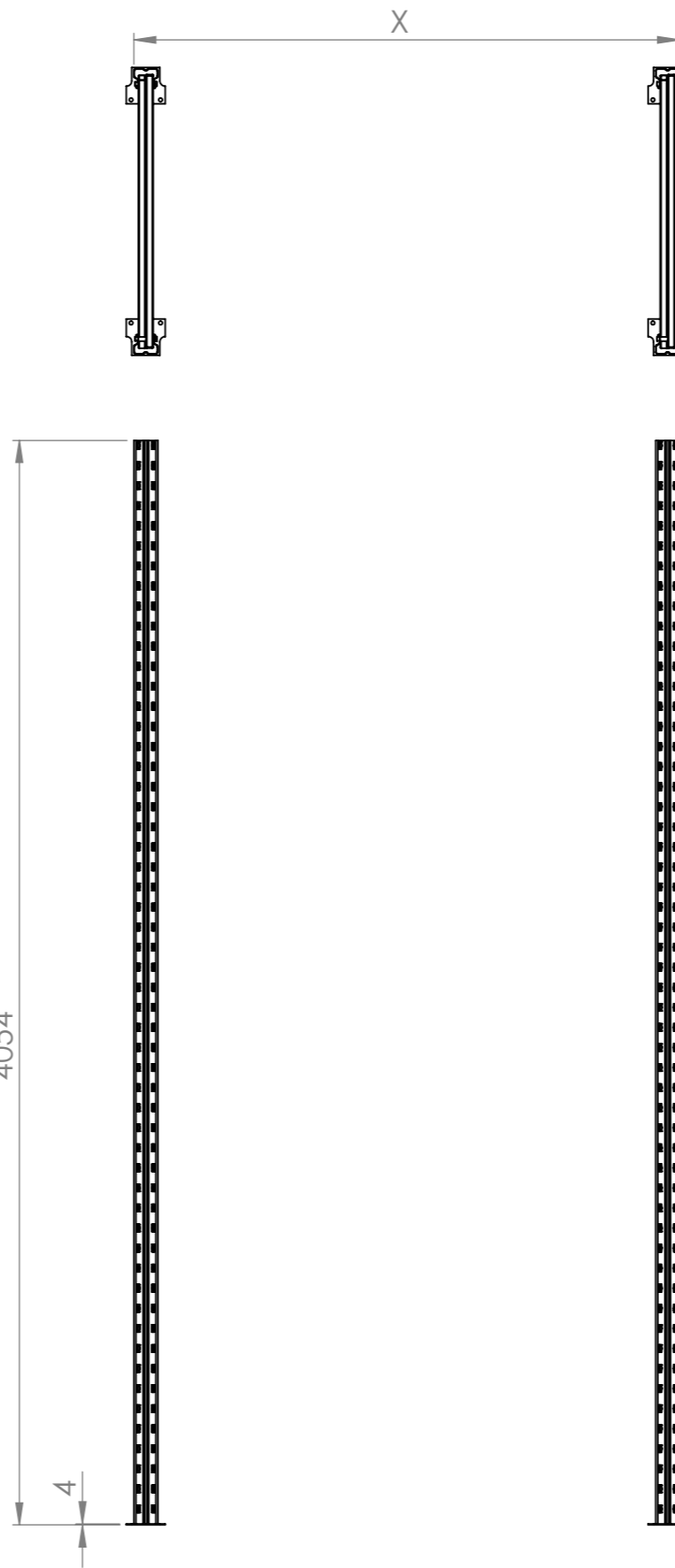
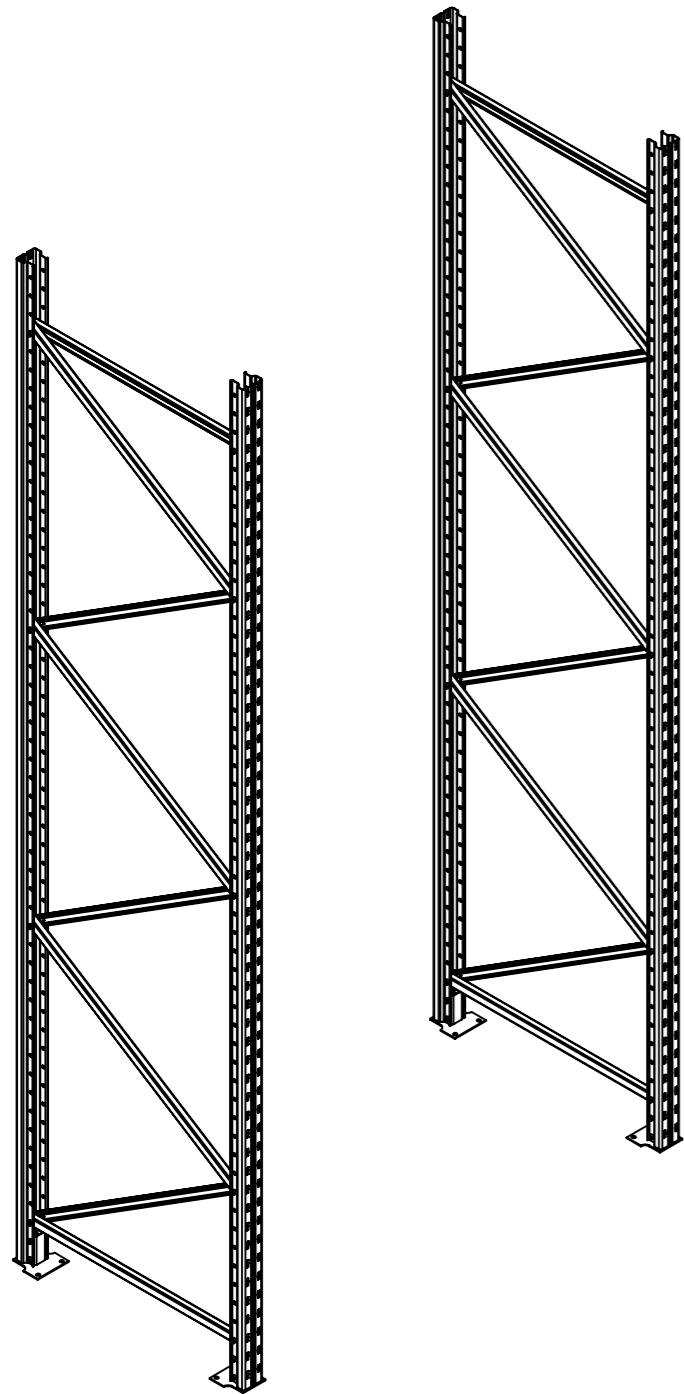
Drawn by PS

Checked by --



DO NOT SCALE

Scale@A3 1:20



Rev	Date	Description

ALL DIMENSIONS IN (mm)
UNLESS OTHERWISE SPECIFIED
BREAK ALL SHARP EDGES

TOLERANCES
(BEFORE PAINTING
& AFTER PLATING)
X ± 1.00
X.X ± 0.50
X.XX ± 0.10
ANGLES ± 0.5°

A02- DIMENSIONS

CLIENT: RFA
PROJ. NO.: TBA
PART NO.: --
Revision --
Page 2

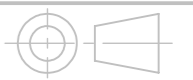
4000mm(H) x 1067mm(D)
PALLET RACKING

PRODUCT CODE: **RFA6014**

Date: 18/07/2023

Drawn by PS

Checked by --



DO NOT SCALE

Scale@A3 1:25

ITEM NO.	PartNo	DESCRIPTION	QTY.
1	RFA6015	4000mm(H) x 1067mm(D) FRAME	2



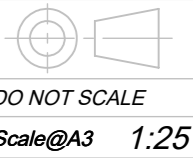
Rev	Date	Description

ALL DIMENSIONS IN (mm)
UNLESS OTHERWISE SPECIFIED
BREAK ALL SHARP EDGES

TOLERANCES
(BEFORE PAINTING
& AFTER PLATING)
X ± 1.00
X.X ± 0.50
X.XX ± 0.10
ANGLES ± 0.5°

A03- EXPLODED
CLIENT: RFA
PROJ. NO.: TBA
PART NO.: --
Revision --
Page 3

4000mm(H) x 1067mm(D)
PALLET RACKING
-
PRODUCT CODE: RFA6014
Date: 18/07/2023
Drawn by PS
Checked by --



DO NOT SCALE
Scale@A3 1:25