



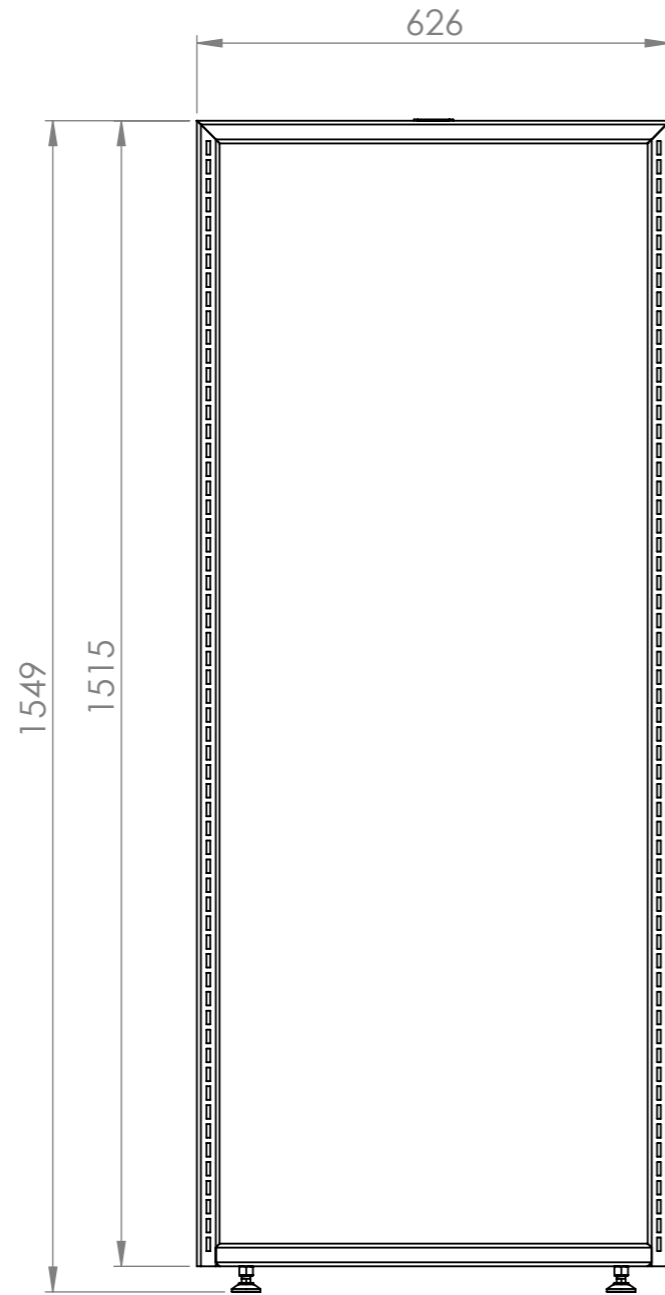
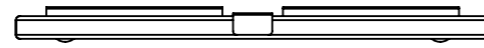
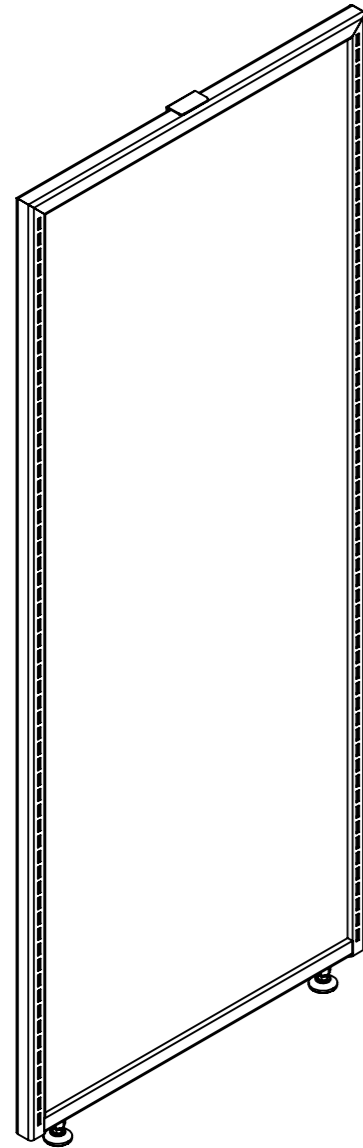
Rev	Date	Description

ALL DIMENSIONS IN (mm)
UNLESS OTHERWISE SPECIFIED
BREAK ALL SHARP EDGES

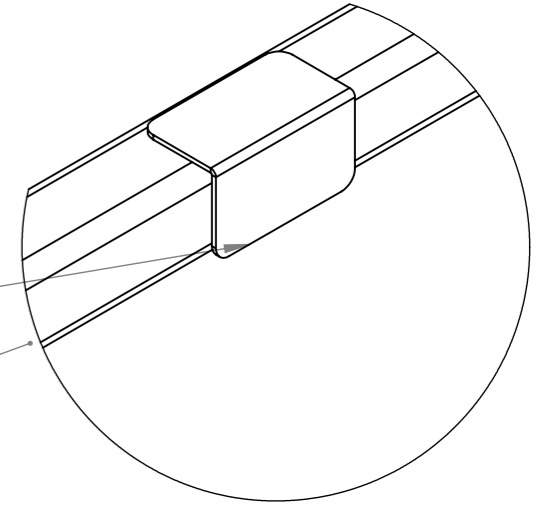
TOLERANCES
(BEFORE PAINTING
& AFTER PLATING)
X ± 1.00
X.X ± 0.50
X.XX ± 0.10
ANGLES ± 0.5°

A02- RENDER
CLIENT: RFA
PROJ. NO.: TBA
PART NO.: --
Revision --
Page 2

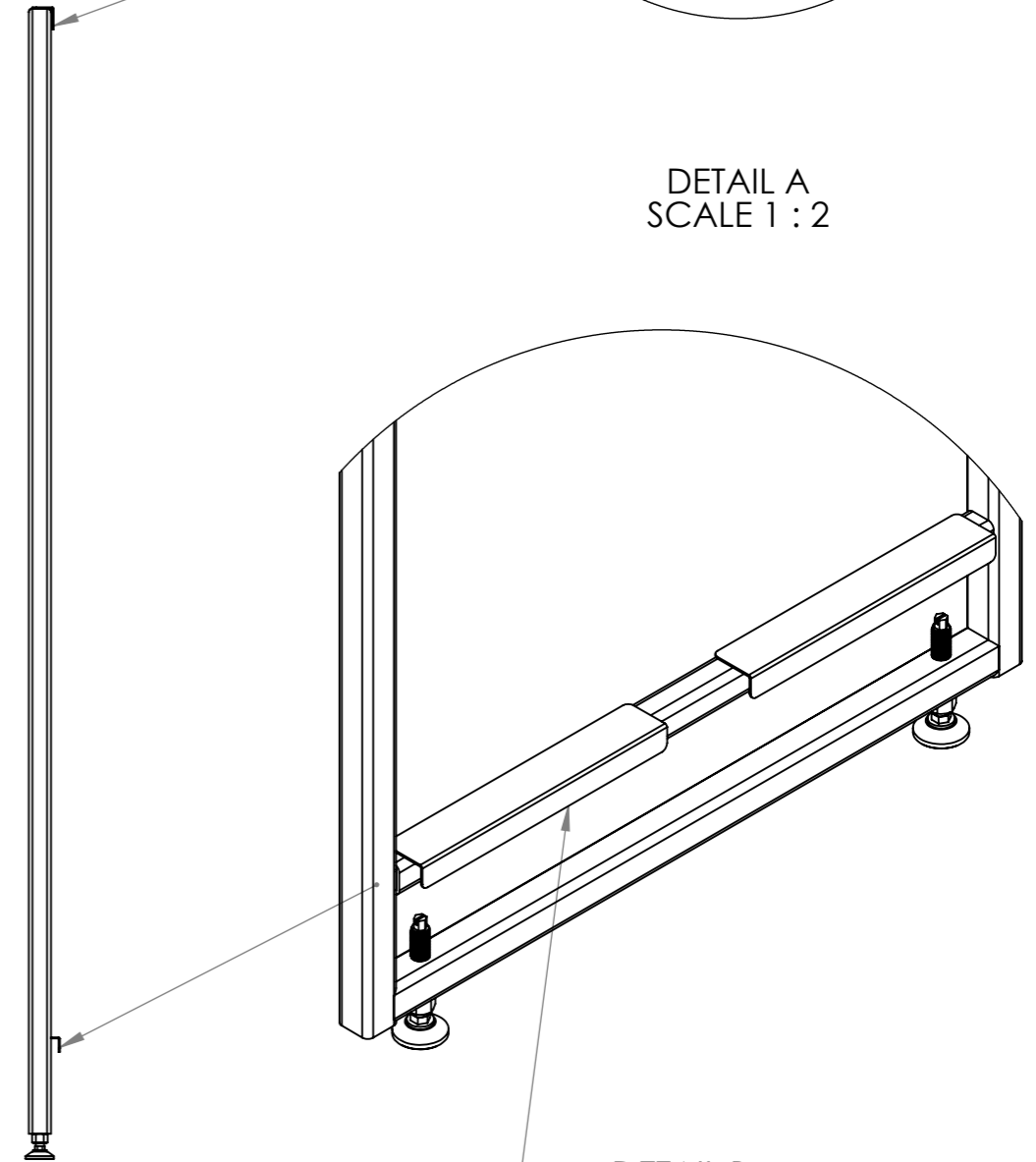
630mm (W) x 1515mm (H) GONDOLA END PANEL NON PERFORATED (MATTE BLACK)		
PRODUCT CODE: RFA1090		
Date: 2/11/2022	PS	DO NOT SCALE
Drawn by	--	Scale@A3 1:10
Checked by	--	



LOCKS INSIDE OF THE TOP OF THE GONDOLA POST



DETAIL A
SCALE 1 : 2



LOCKS INTO THE U-CHANNEL OF THE GONDOLA POST

DETAIL B
SCALE 1 : 5

Rev	Date	Description

ALL DIMENSIONS IN (mm)
UNLESS OTHERWISE SPECIFIED
BREAK ALL SHARP EDGES

TOLERANCES
(BEFORE PAINTING
& AFTER PLATING)
X ± 1.00
X.X ± 0.50
X.XX ± 0.10
ANGLES ± 0.5°

A03- DIMENSIONS

CLIENT: RFA
PROJ. NO.: TBA
PART NO.: --
Revision --
Page 3

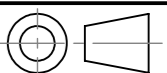
630mm (W) x 1515mm (H) GONDOLA END PANEL
GONDOLA END PANEL - NON PERFORATED

PRODUCT CODE: **RFA1053/1090**

Date: 2/11/2022

Drawn by PS

Checked by --



DO NOT SCALE

Scale@A3 1:10