

This product is an Add Bay
 * Supplied with (1) post only
 * Connects to the post of the Neighboring Bay

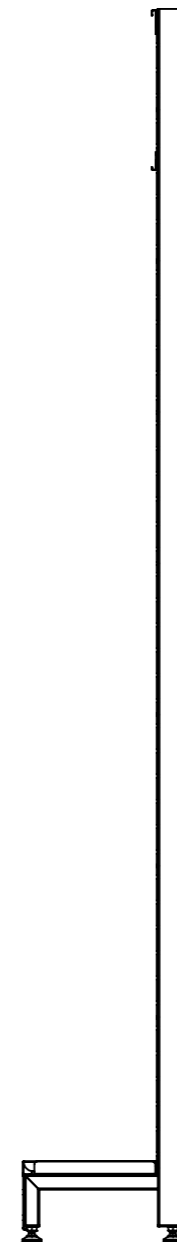
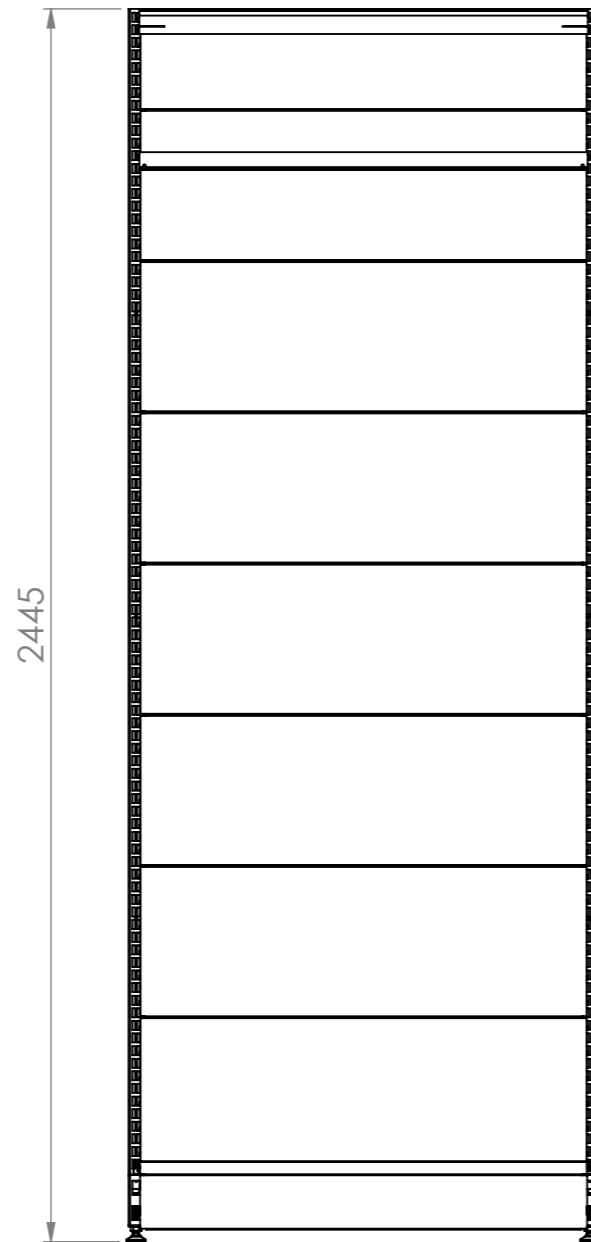
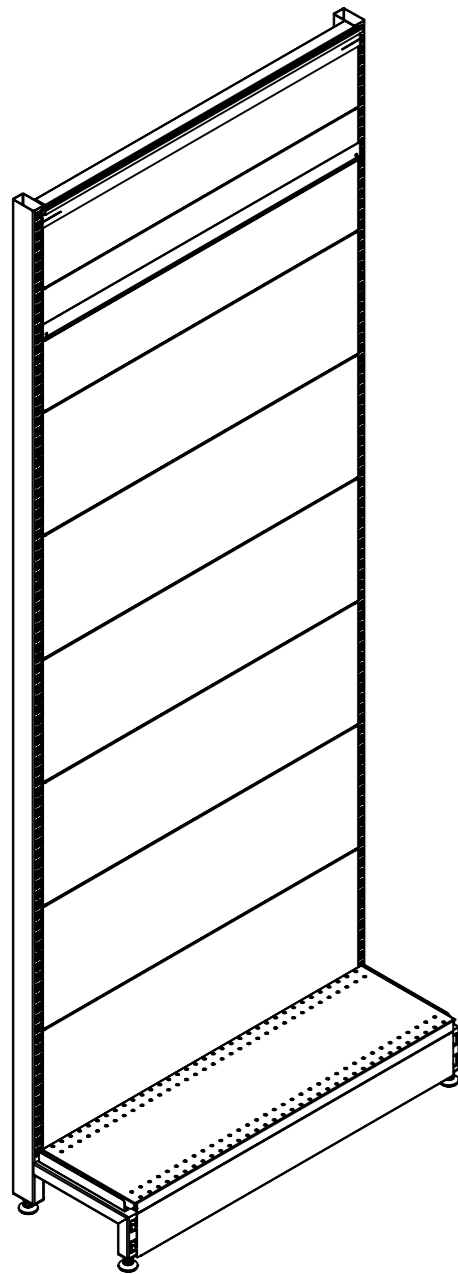
Rev	Date	Description

ALL DIMENSIONS IN (mm)
 UNLESS OTHERWISE SPECIFIED
 BREAK ALL SHARP EDGES

TOLERANCES
 (BEFORE PAINTING
 & AFTER PLATING)
 X ± 1.00
 X.X ± 0.50
 X.XX ± 0.10
 ANGLES ± 0.5°

A02- RENDER
CLIENT: RFA
PROJ. NO.: TBA
PART NO.: --
Revision --
Page 2

900mm (W) x 2415mm (H) x 270mm (D) WALL BAY - NON PERFORATED ADD BAY (MATTE BLACK)		
PRODUCT CODE: RFA1070		
Date:	28/10/2022	DO NOT SCALE
Drawn by	CB	
Checked by	--	
Scale@A3		1:1



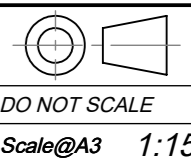
Rev	Date	Description

ALL DIMENSIONS IN (mm)
UNLESS OTHERWISE SPECIFIED
BREAK ALL SHARP EDGES

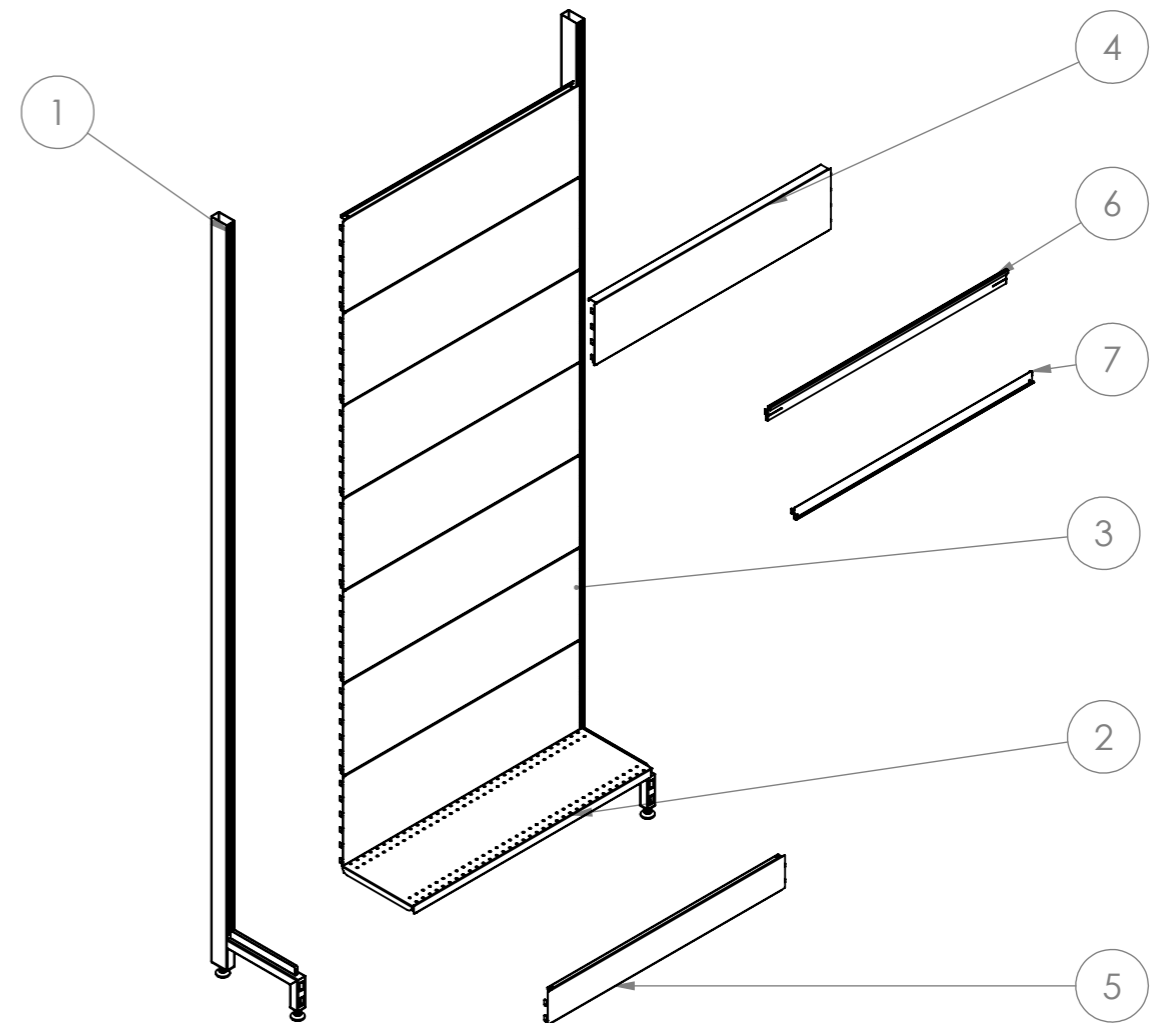
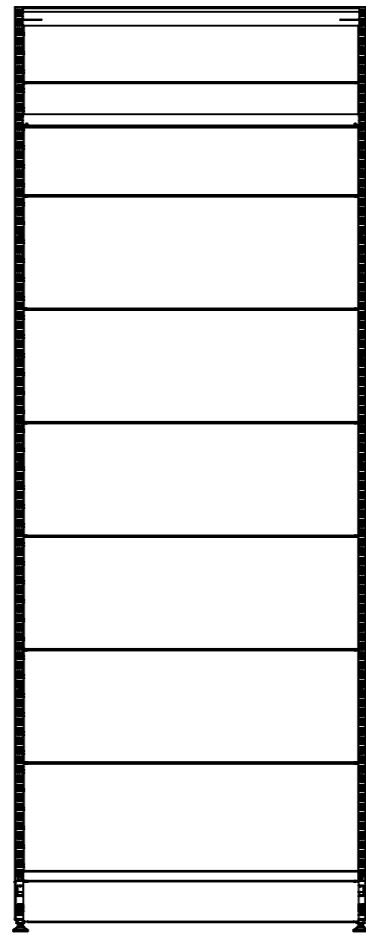
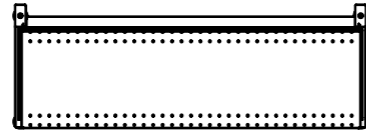
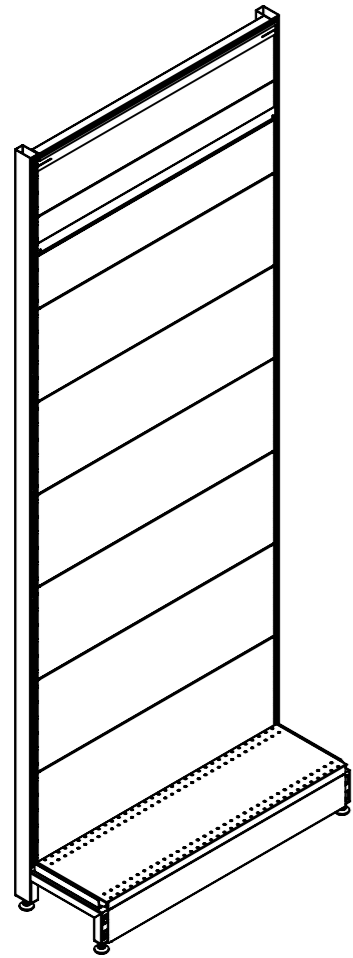
TOLERANCES
(BEFORE PAINTING
& AFTER PLATING)
X ± 1.00
X.X ± 0.50
X.XX ± 0.10
ANGLES ± 0.5°

A03- DIMENSIONS
CLIENT: RFA
PROJ. NO.: TBA
PART NO.: --
Revision --
Page 3

900mm (W) x 2415mm (H) x 270mm (D)
WALL BAY - NON PERFORATED
ADD BAY
PRODUCT CODE: **RFA1070**
Date: 28/10/2022
Drawn by CB
Checked by --



DO NOT SCALE
Scale@A3 1:15



ITEM NO.	PART NUMBER	QTY.
1	RFA1100 2400mm (H) WALL BAY POST	2
2	RFA1323-RFA1324 900X270 STEEL SHELF	1
3	RFA1102-RFA1202 900X300 NON PERF PANEL	7
4	RFA1104-RFA1204 900X200 NON PERF PANEL	1
5	RFA1110-RFA1210 SKIRT	1
6	RFA1118 900mm (W) SIGNAGE TOP BRACKET	1
7	RFA1119 900mm (W) SIGNAGE BOTTOM BRACKET	1

Rev	Date	Description

ALL DIMENSIONS IN (mm)
UNLESS OTHERWISE SPECIFIED
BREAK ALL SHARP EDGES

TOLERANCES
(BEFORE PAINTING
& AFTER PLATING)
X ± 1.00
X.X ± 0.50
X.XX ± 0.10
ANGLES ± 0.5°

A04- EXPLODED

CLIENT: RFA

PROJ. NO.: TBA

PART NO.: --

Revision --

Page 4

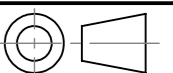
900mm (W) x 2415mm (H) x 270mm (D)
WALL BAY - NON PERFORATED
START BAY

PRODUCT CODE: **RFA1070**

Date: 28/10/2022

Drawn by CB

Checked by --



DO NOT SCALE

Scale@A3 1:20