

FINISH: P/C GREEN

AP ASSOCIATED PROJECTS COMMERCIAL BUILDERS,
PROJECT MANAGERS,
PLANNERS & DESIGNERS

T 03 8787 3000 F 03 8787 3025
48-58 Cyber Loop, Dandenong South VIC 3175

Rev	Date	Description

ALL DIMENSIONS IN (mm)
UNLESS OTHERWISE SPECIFIED
BREAK ALL SHARP EDGES

TOLERANCES
(BEFORE PAINTING
& AFTER PLATING)
X ± 1.00
X.X ± 0.50
X.XX ± 0.10
ANGLES ± 0.5°

A01- RENDER
CLIENT: JAKMAX
PROJ. NO.: TBA
PART NO.: --
Revision --
Page 1

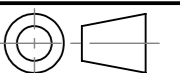
900mm(W) x 200mm(H) x 450mm(D)
PELMET FACE PLATE
-

PRODUCT CODE: **RFA0250**

Date: 18/01/2024

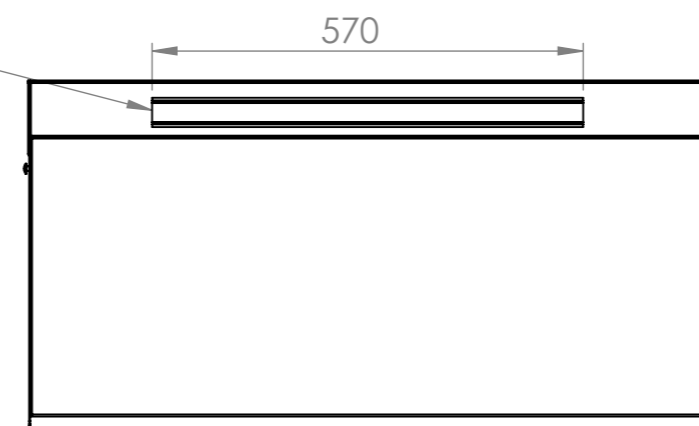
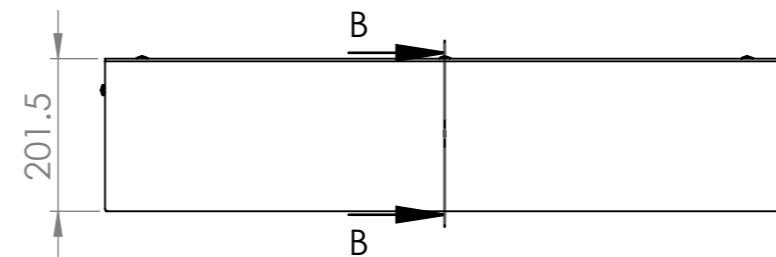
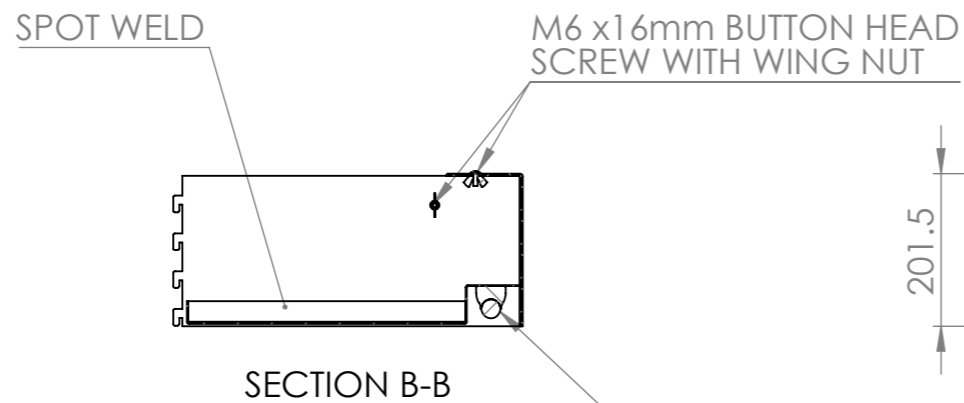
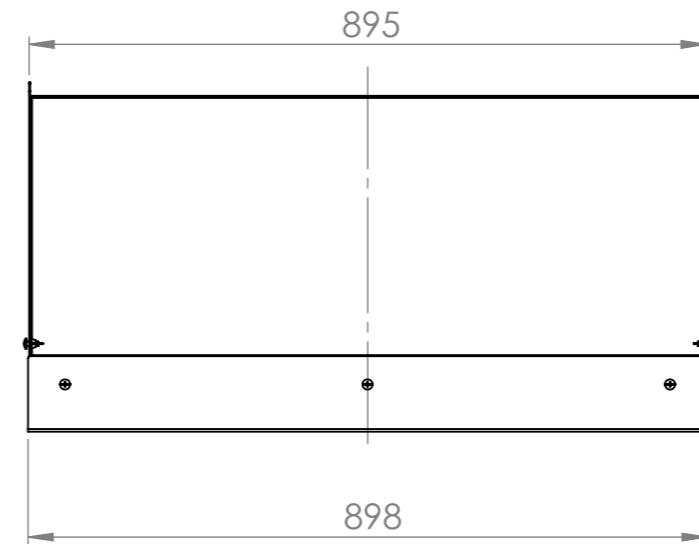
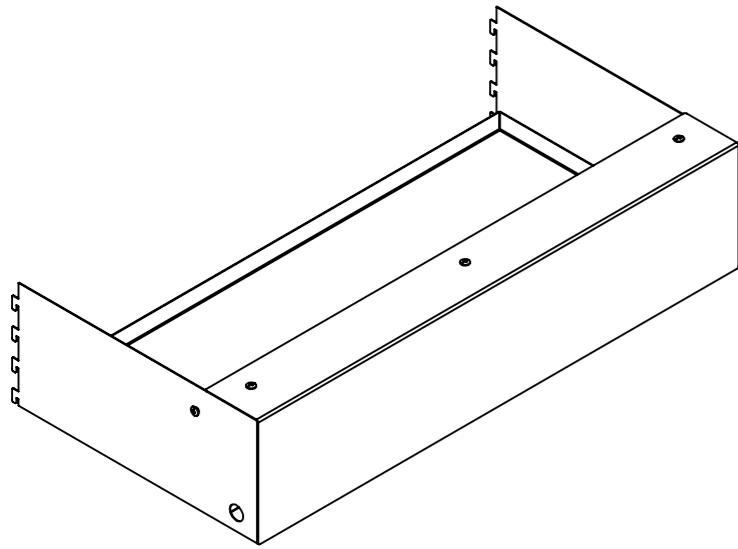
Drawn by PS

Checked by --



DO NOT SCALE

Scale@A3 1:10



Rev	Date	Description

ALL DIMENSIONS IN (mm)
UNLESS OTHERWISE SPECIFIED
BREAK ALL SHARP EDGES

TOLERANCES
(BEFORE PAINTING
& AFTER PLATING)
X ± 1.00
X.X ± 0.50
X.XX ± 0.10
ANGLES ± 0.5°

A02- DIMENSIONS

CLIENT: JAKMAX
PROJ. NO.: TBA
PART NO.: --
Revision --
Page 2

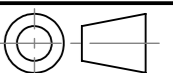
900mm(W) x 200mm(H) x 450mm(D)
PELMET FACE PLATE WITH PELMET BOX

PRODUCT CODE: **RFA0250**

Date: 18/01/2024

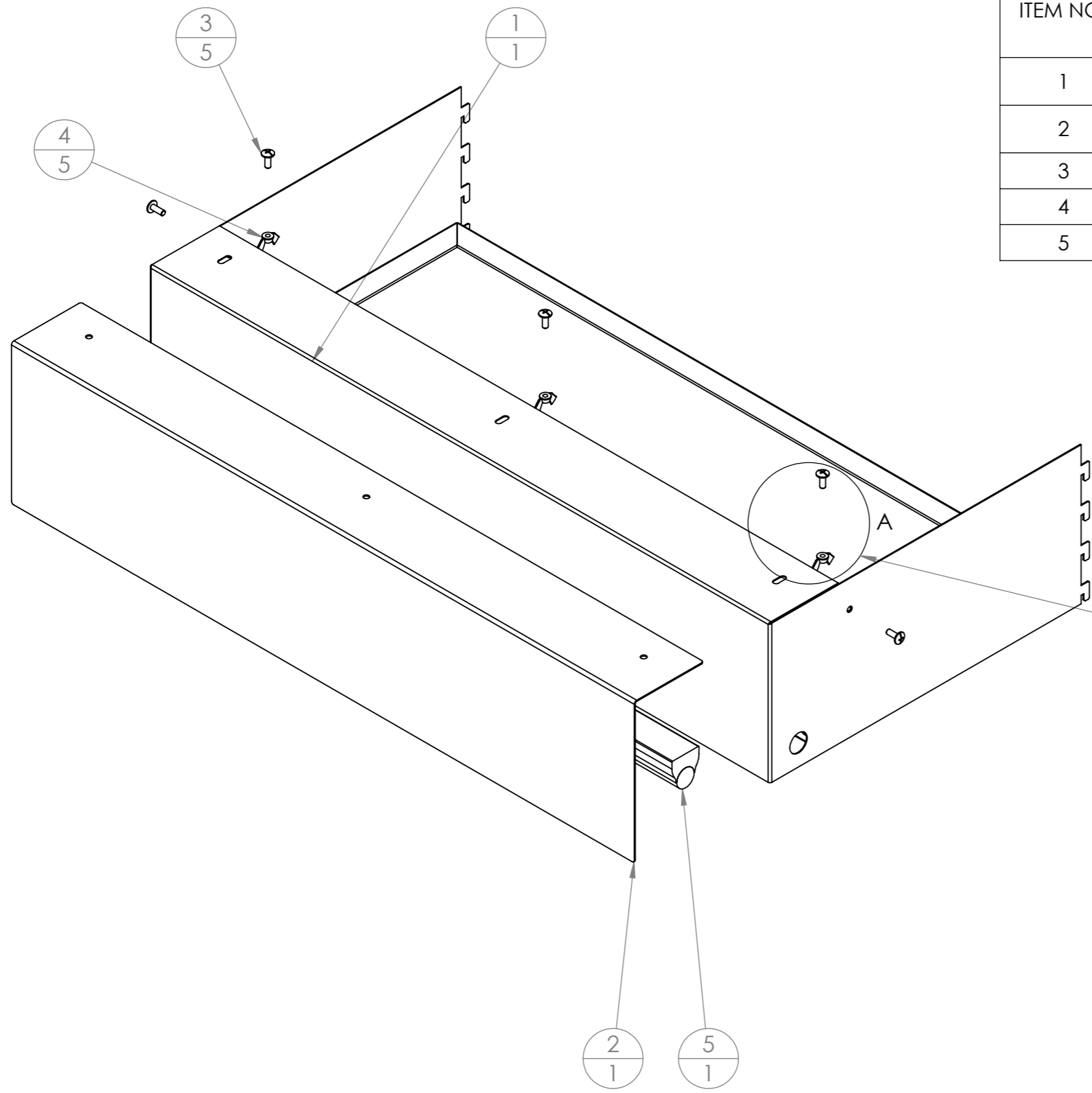
Drawn by PS

Checked by --

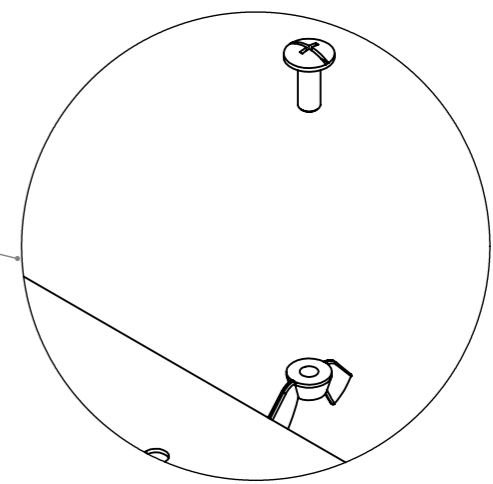


DO NOT SCALE

Scale@A3 1:10



ITEM NO.	PartNo	DESCRIPTION	QTY.
1	RFA0251	900mm(W) x 200mm(H) x 450mm(D) PELMET BOX	1
2	RFA052	900mm(W) x 300mm(H) PELMET FACE PLATE	1
3		M6 x 16mm BUTTON HEAD SCREW	5
4		M6 WING NUT	5
5		LED LIGHT LENGTH 570mm	1



DETAIL A
SCALE 1 : 2

Rev	Date	Description

ALL DIMENSIONS IN (mm)
UNLESS OTHERWISE SPECIFIED
BREAK ALL SHARP EDGES

TOLERANCES
(BEFORE PAINTING
& AFTER PLATING)
X ± 1.00
X.X ± 0.50
X.XX ± 0.10
ANGLES ± 0.5°

A05- EXPLODED
CLIENT: JAKMAX
PROJ. NO.: TBA
PART NO.: --
Revision --
Page 5

900mm(W) x 200mm(H) PELMET FACE PLATE WITH PELMET BOX		
-		
PRODUCT CODE: RFA0250		
Date:	18/01/2024	
Drawn by	PS	
Checked by	--	DO NOT SCALE
		Scale@A3 1:5